

# WHAT THE HELL IS SUNBURN?

## QUALITY & TRANSPARENCY

Whether its strains grown for 1/8ths or strains grown for concentrates, these experts have hunted and vetted all of SUNBURN'S unique genetics. They've slowed down the cultivation process to dissect the plants' needs at every stage of their lifecycles and optimize their cannabinoid profiles for FL medical patients. And for our more experienced patients? The by-product of this high caliber flower is some of the best THC concentrates on the Florida market.

## CULTURE & AUTHENTICITY

True to our history, SUNBURN products are grown & cultivated by a team of cannabis pioneers that know more about black markets than stock markets. We've been able to assemble and grow our farm team into some of the best cannabis artisans in the country. How? Listen, give them the tools they need, & then get the hell out of their way. These passionate growers understand the arduous cultivation process through years of personal experience & fine-tuning, and, for that, we trust their process completely.

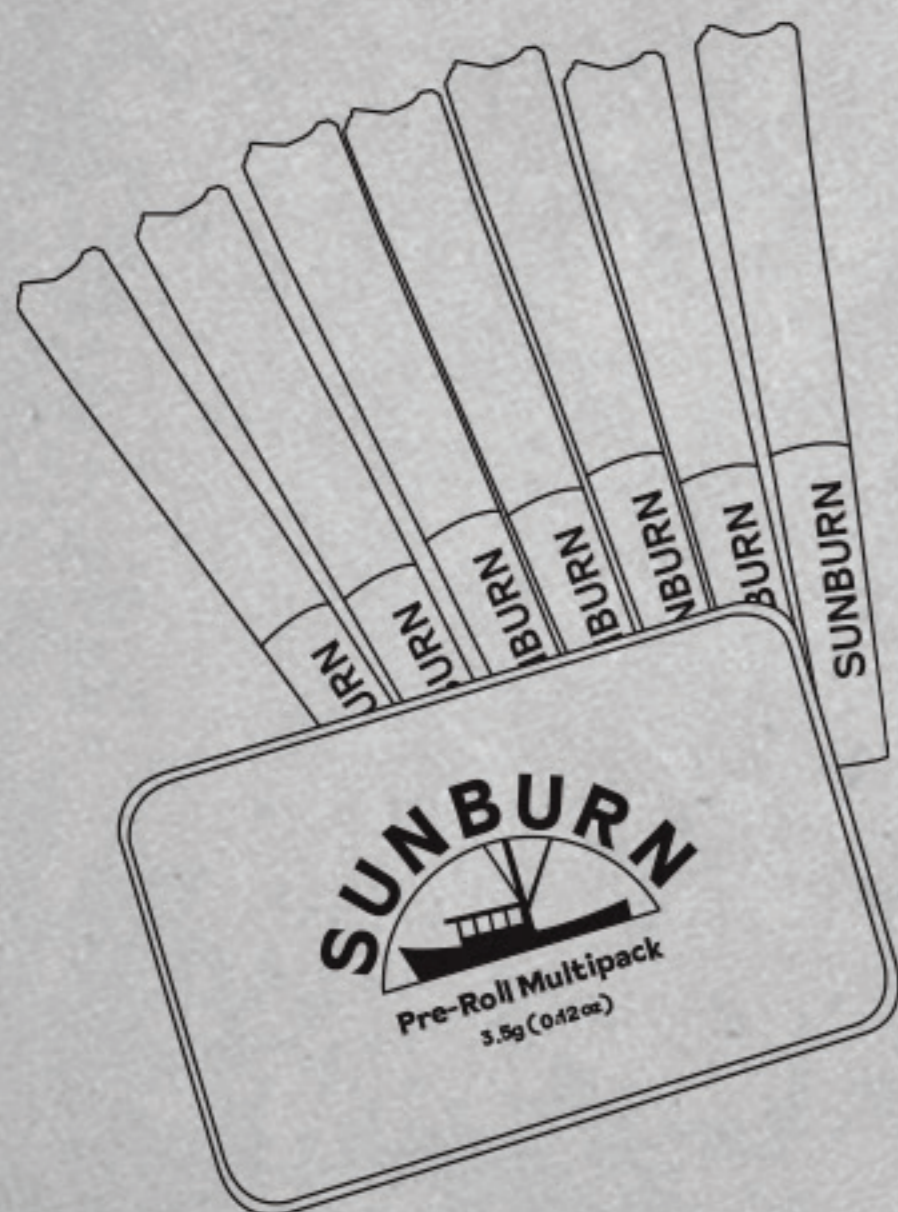
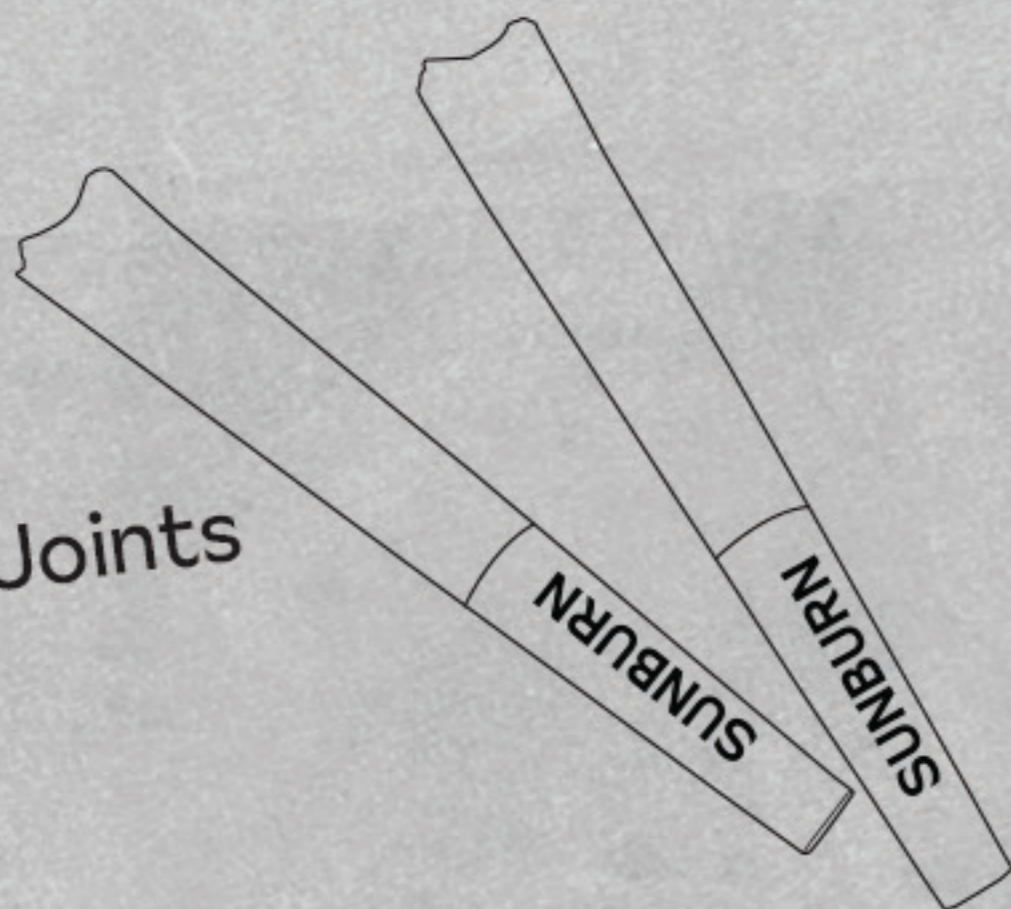
# Flower

## PRODUCT GUIDE

### PRE-ROLL

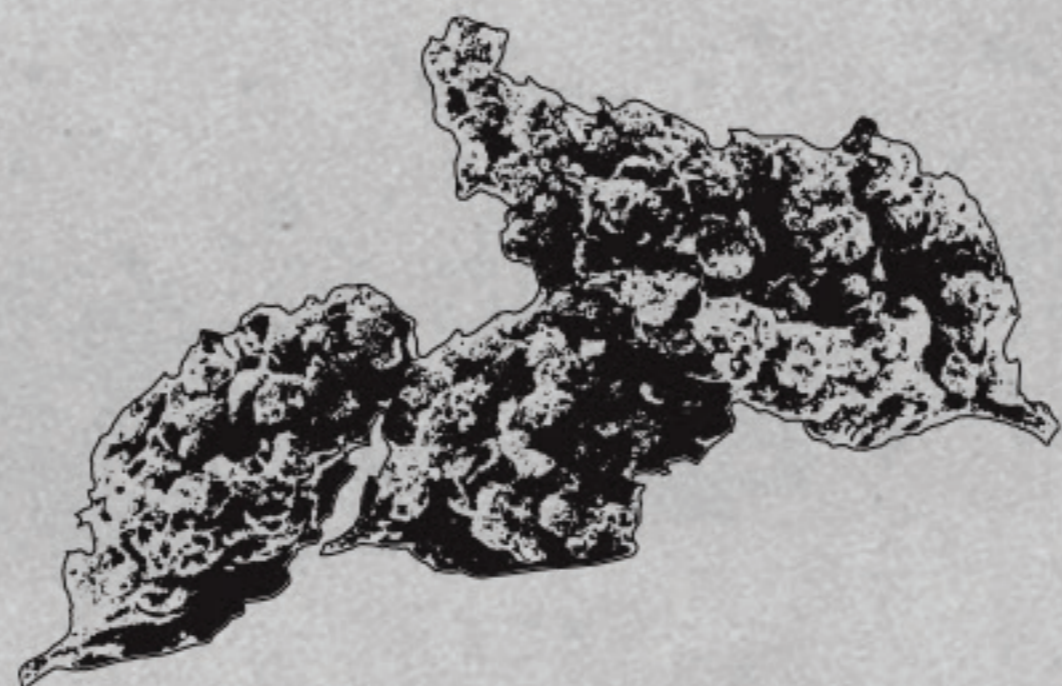
#### 2CT PRE-ROLL PACK:

Two, Ready to Smoke Pre-Rolled Joints  
.5g of Sunburn Whole Flower  
per Pre-Roll (1g Total)  
Dispenses .035 oz to Smoking



#### 7CT PRE-ROLL PACK:

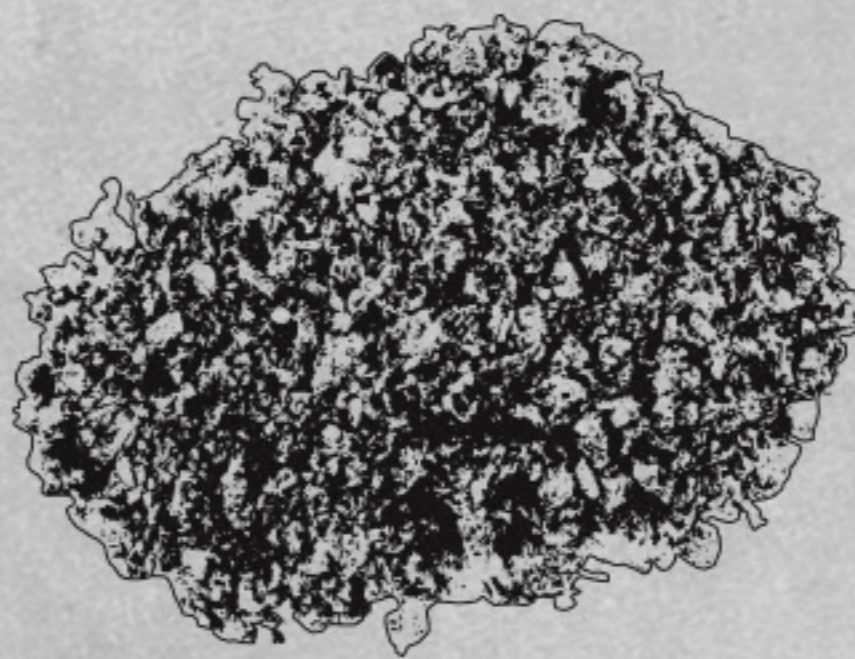
Seven, Ready to Smoke Joints  
.5g of Sunburn Whole Flower  
per Pre-Roll (3.5g Total)  
Dispenses .123 oz to Smoking



### LOOSE FLOWER

#### GROUND FLOWER:

14g (1/2oz) of Sunburn Pre-Ground  
Flower. 3 Effect Options, Ideal for  
Bulk & Convenience Combust/Vaporize  
to Consume Dispenses .494 oz  
to Smoking



#### 3.5G FLOWER:

3.5g (1/8oz) Whole Flower "Eighth"  
Ideal for Stocking Up on Your Favorite Strains  
Grind & Combust/Vaporize to Consume  
Dispenses .123 oz to Smoking


#### 7G FLOWER:

7g (1/4oz) of Sunburn Small Bud Flower "Quarter"  
Smaller Buds from the Same Strains, Ideal for Bulk  
Grind & Combust/Vaporize to Consume  
Dispenses .247 oz to Smoking

**WE'VE GOT SOMETHING  
FOR EVERYONE \***

\* Consult with our local budtenders  
to figure out what is best for you.

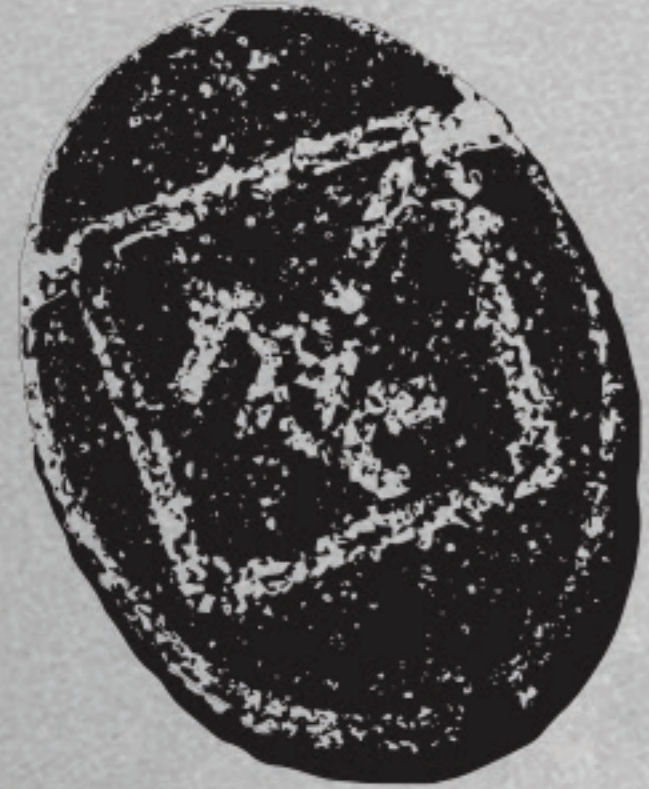
#### LEGEND

 = EXCLUSIVE  
TO SUNBURN

# ROSIN

## PRODUCT GUIDE

### EDIBLE



**ROSIN CHEW:**  
100mg 10pk Live Rosin Chew  
(10) 10mg Flavored Chews per Pack  
Solventless, Full-Spectrum, & Discreet  
Dispenses ~100mg to Medical - Edibles

**100MG NECTAR:**  
2oz (60mL) Live Rosin Infused Nectar  
1.67mg THC per 1mL Dropper  
Infuse Food or Drink with Light Dosing  
Dispenses 100mg to Medical - Oral

**150MG NECTAR:**  
2oz (60mL) Live Rosin Infused Nectar  
1.67mg THC + .83 CBN per 1mL Dropper  
Infuse Food or Drink with Sedating  
CBN Blend Dispenses 100mg  
to Medical - Oral

**500MG NECTAR:**  
2oz (60mL) Live Rosin Infused Nectar  
8.33mg THC per 1mL Dropper  
Infuse Food or Drink with Potent Dosing  
Dispenses 500mg to Medical - Oral



**WE'VE GOT SOMETHING  
FOR EVERYONE \***

\* Consult with our local budtenders  
to figure out what is best for you.

### LEGEND

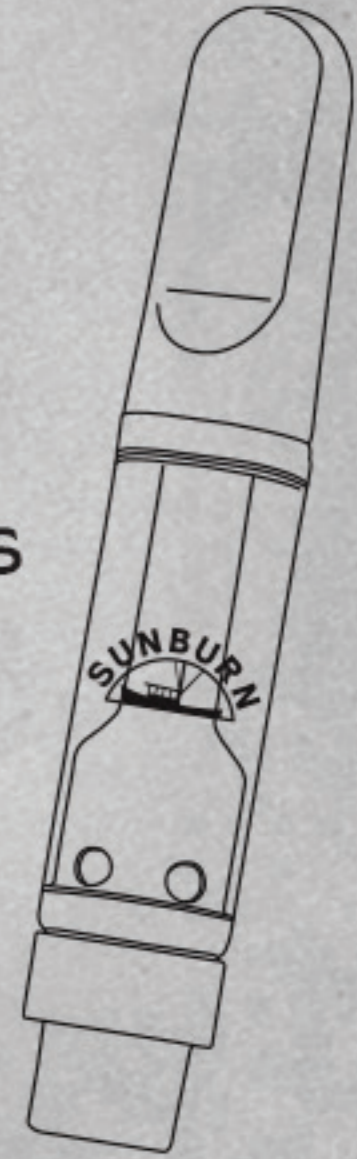
 = EXCLUSIVE  
TO SUNBURN

### SMOKEABLE

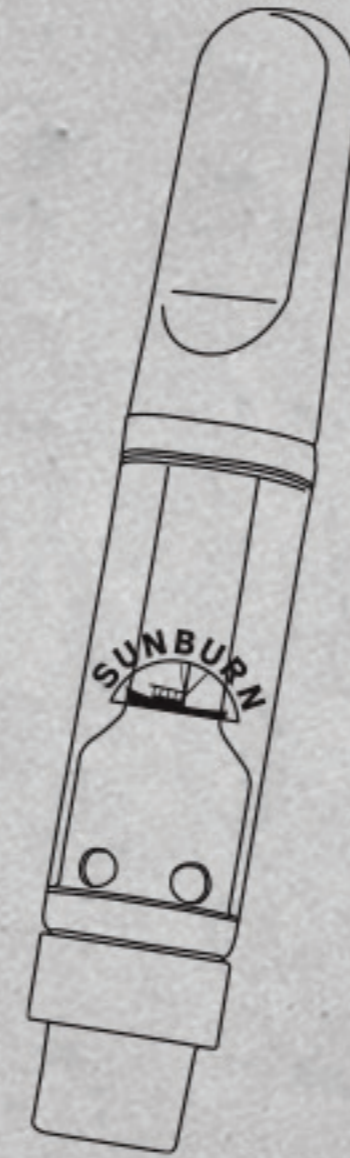


**ALL-IN-ONE LIVE ROSIN VAPE:**  
.5mL Ready-to-Use,  
Discreet Device Solventless,  
Full-Spectrum Live Rosin  
Dispenses ~350-450mg  
to Medical - Inhalation

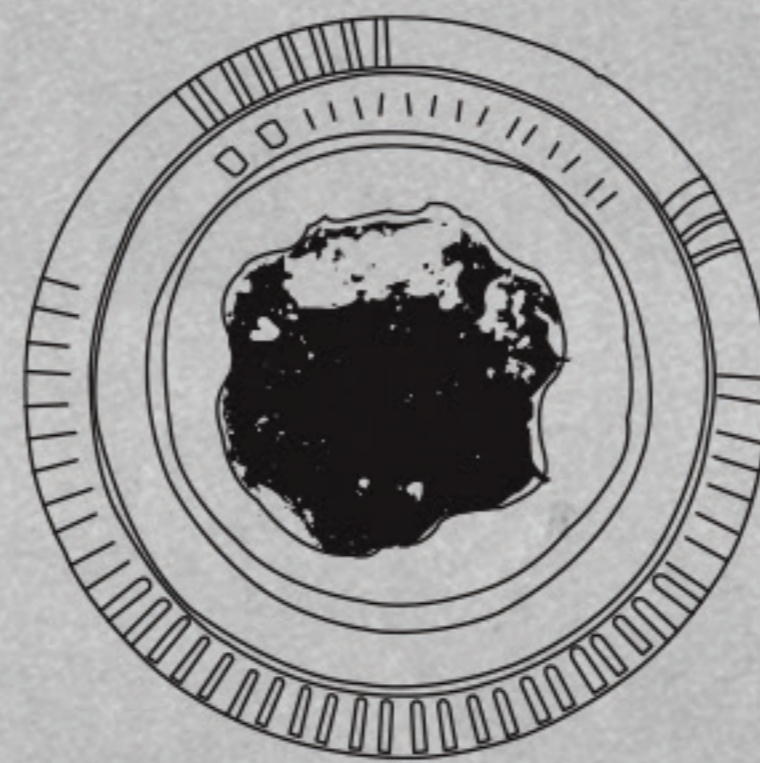
**LIVE ROSIN 510 CARTRIDGE:**  
Embedded ceramic heating delivers  
smooth, even vapor  
Full-Spectrum Live Rosin  
Dispenses ~350-450mg to  
Medical - Inhalation



**CDT VAPE:**  
1g Cannabis-Derived Terpene Vape  
Available in Sativa, Hybrid, or Indica Blends  
Flavor-Forward, True-to-Flower Experience  
Dispenses ~800mg to Inhalation



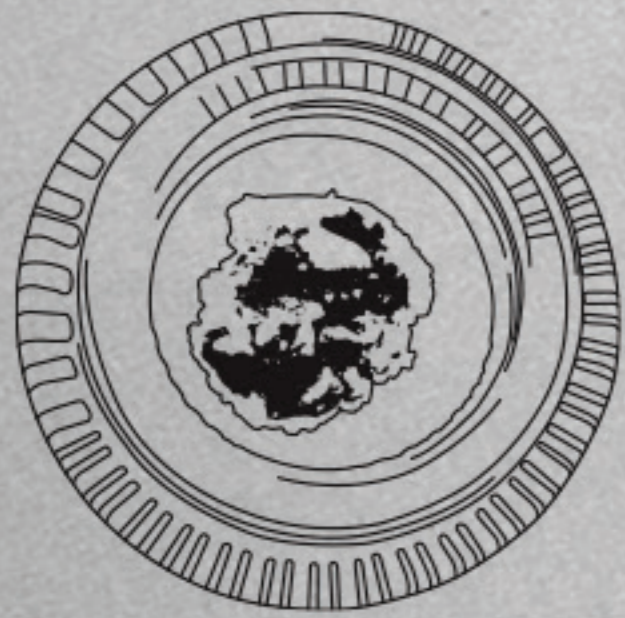
**THUMBPRINT:**  
4g 90u Live Rosin Blend (Badder + Jam)  
Crafted from Two Unique Strains  
Small Batch, Full-Spectrum Flavor & Effect  
Dispenses ~3500mg Inhalation



# ROSIN

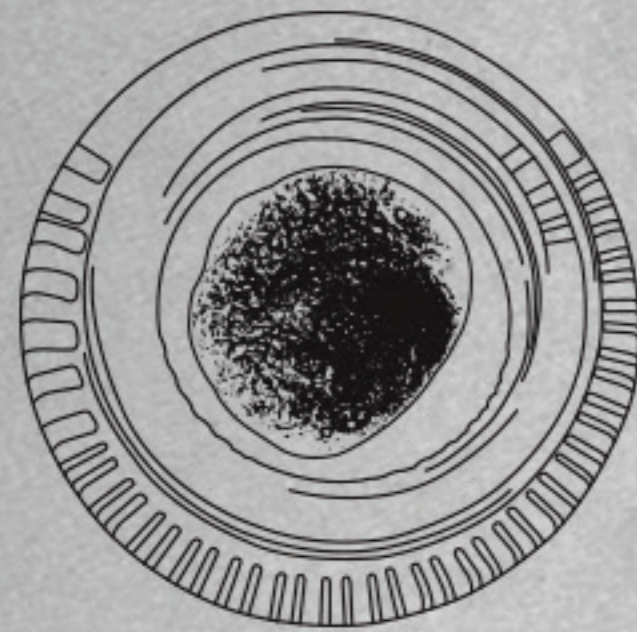
## PRODUCT GUIDE

### SMOKEABLE



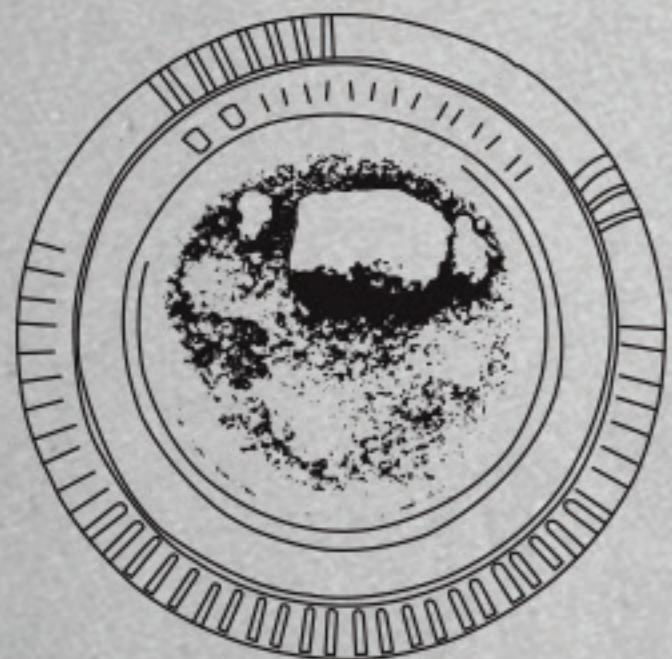
#### BADDER:

1g or 4g 90u Live Rosin Badder Dabbable, Solventless, & Full-Spectrum Refrigerate to Preserve Soft Butter Consistency. Dispenses ~700mg (1g) or ~3000mg (4g) to Medical - Inhalation



#### JAM:

1g or 4g 90u Live Rosin Jam Dabbable, Solventless, & Full-Spectrum Refrigerate to Preserve Jam Consistency Dispenses ~750mg (1g) or ~3000mg (4g) to Medical - Inhalation



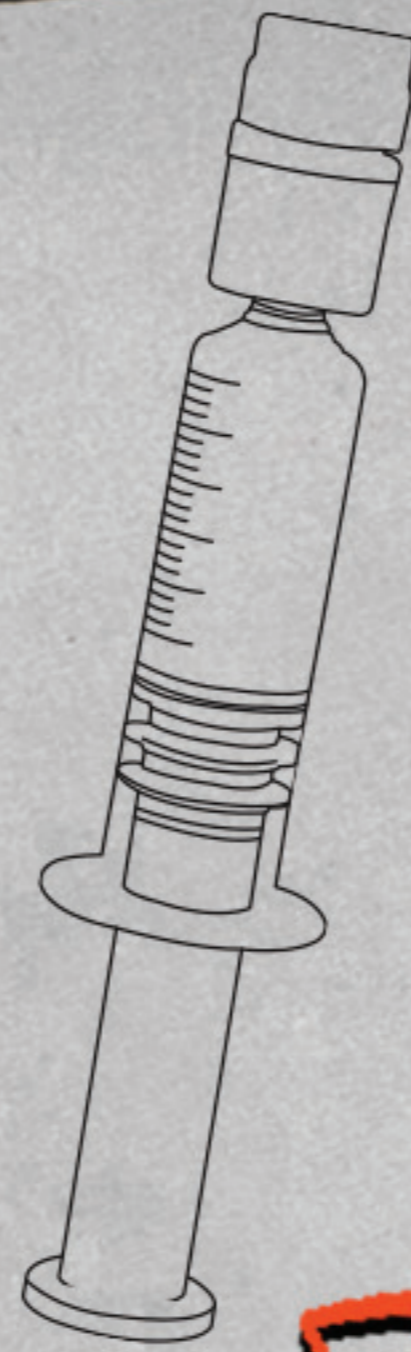
#### BUBBLE HASH:

1g 90u Ice Water Extracted Bubble Hash Dabbable, Solventless, & Full-Spectrum Refrigerate to Preserve Intact Trichomes Dispenses ~600-750mg to Medical - Inhalation



#### FRESH PRESS:

1g or 4g 90u Live Rosin Fresh Press Dabbable, Solventless, & Full Spectrum Refrigerate to preserve Fresh Press consistency Dispenses ~750MG (1g) or ~3000MG (4g) to Medical - Inhalation

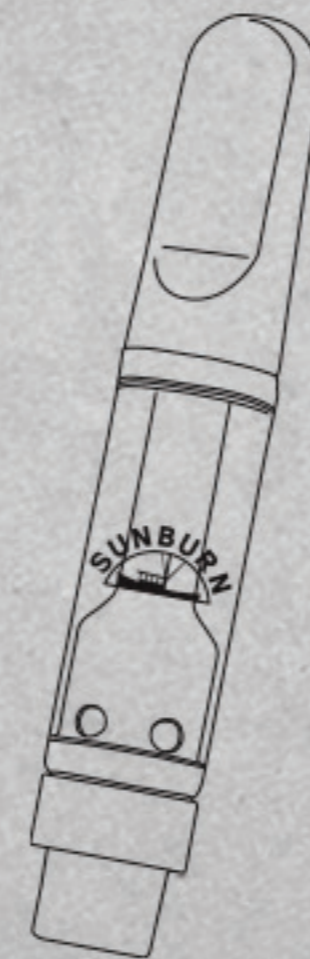


# ORAL

#### RSO:

1g Refined Full-Spectrum RSO High THC with Minor Cannabinoids & Terpenes Golden Oil, Slow-Release, Sustained Relief Dispenses ~800mg to Oral

# DISTILLATE



#### DISTILLATE VAPE:

1g Distillate THC Oil with Effect-Specific Terpenes Ceramic Mouthpiece Cartridge with 510 Threading. Vaporize via 510 Battery to Consume. Dispenses ~700-850mg to Medical - Inhalation

\*Also available in CBN blends

#### LOZENGES & SOOTHERS:

150MG 20CT Sublingual Lozenges (20) 2.5MG THC Each, 50mg THC per Package Ideal for discreet & accurate Micro-Dosing Lozenges come in a selection of Sour & Fruit Flavors Soothers come in a selection of Menthol-Infused, Soothing Flavors Dispenses ~50MG to Medical - Edibles



# DISTILLATE

## PRODUCT GUIDE

# TOPICALS

### **DISTILLATE CHEW:**

100MG 10pk THC Distillate Chew (10) 10mg Flavored Chews per Pack Ideal for Discreet & Accurate Dosing  
Dispenses ~100mg to Medical – Edibles

### **CBN CHEW:**

100MG THC : 50MG CBN Chew (10) 10mg Flavored Chews per Pack Ideal for Accurate Dosing & Sedating Effects  
Dispenses ~150mg to Medical – Edibles

### **1:1 CBD CHEW:**

10MG THC : 10MG CBD Chew (10) These chews are built for balance. Designed to take the edge off without tipping the scale, they're a solid go-to for steady, functional relief.  
Dispenses ~100mg to Medical – Edibles

### **SUGAR FREE CHEWS:**

100MG 10PK THC Distillate Chew (10) 10MG Flavored Chews per Pack sweetened with allulose and maltitol  
Dispenses ~ 100mg to Medical - Edibles

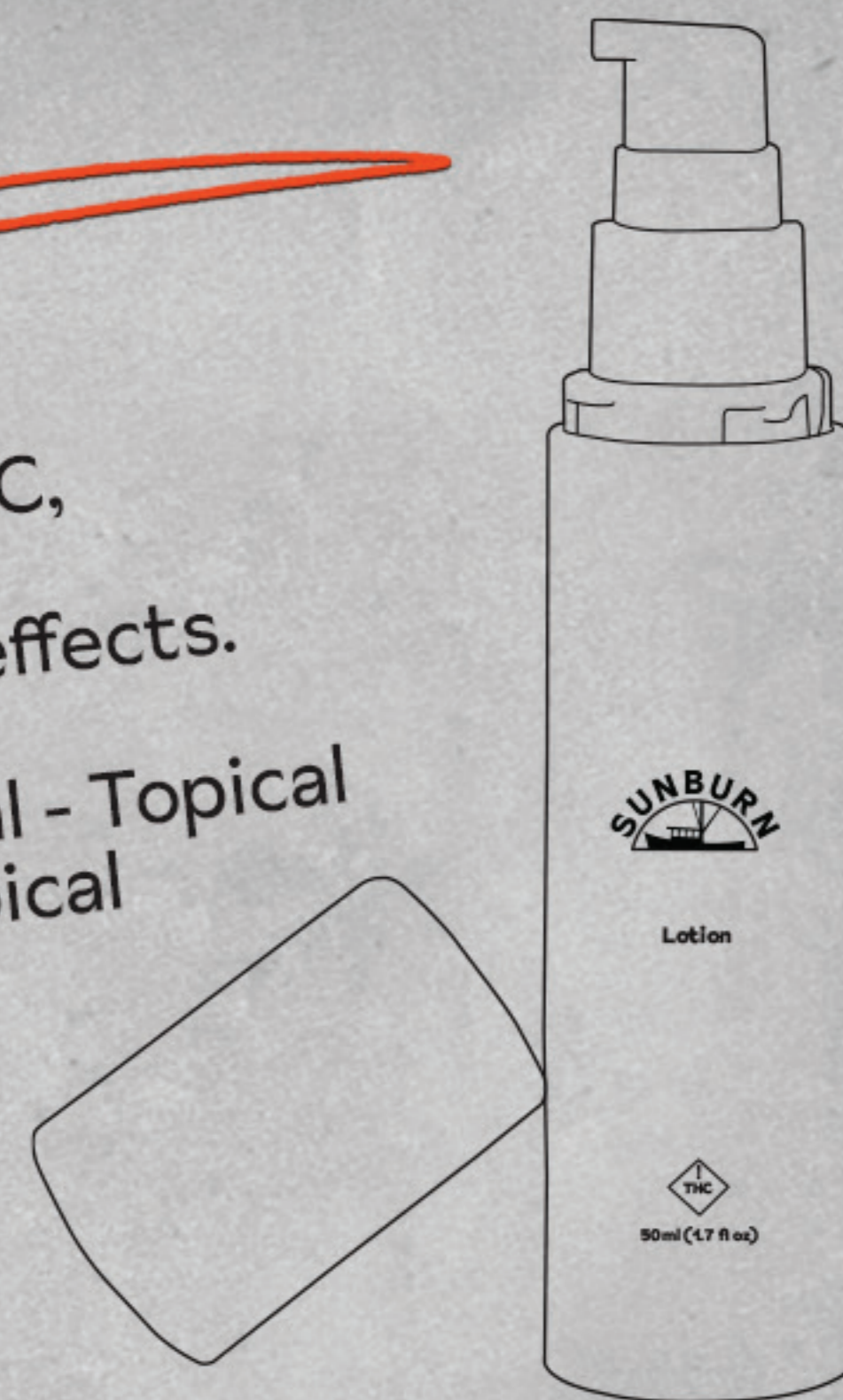


### **WHIPPED BODY BUTTER 150MG 1:1:**

2 FL OZ 75MG THC, 75MG CBD Whipped Body Butter. Lavender, Bergamot & Ginger Scented, 2oz tin. Ideal for non-psychoactive, light & localized effects.  
Dispense ~75mg to Medical - Topical & ~75mg to Low THC - Topical

### **LOTION 400MG 1:1:**


1.7 FL OZ Unscented 200MG THC, 200MG CBD Lotion Ideal for non-psychoactive, localized effects. Easy-to-use pump bottle.  
Dispense ~200mg to Medical - Topical & ~200mg to Low THC - Topical



**WE'VE GOT SOMETHING FOR EVERYONE \***

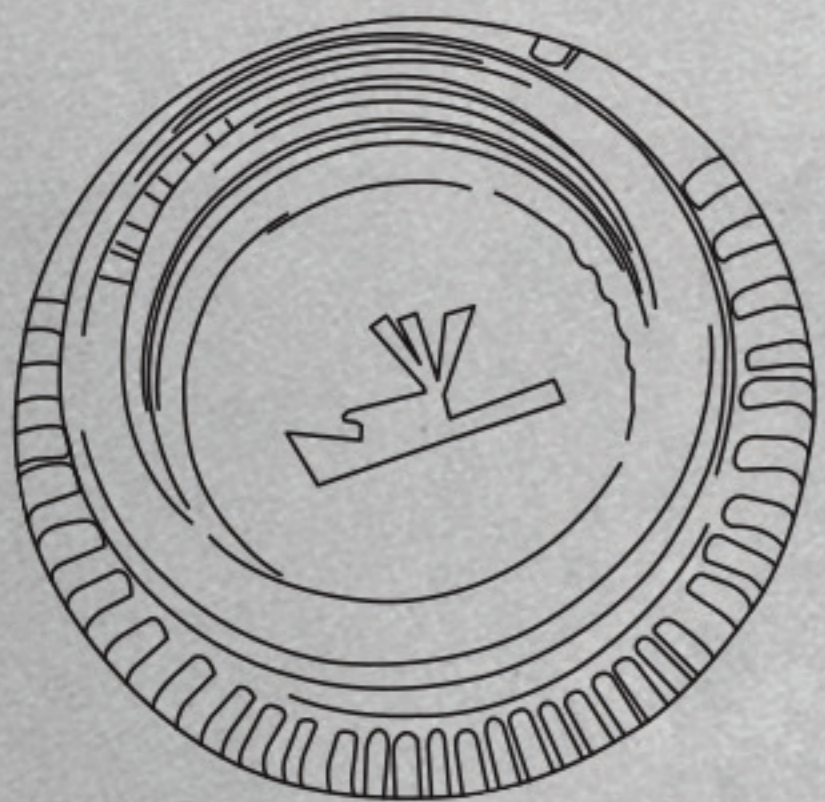
\* Consult with our local budtenders to figure out what is best for you.

### **LEGEND**

 = EXCLUSIVE TO SUNBURN

# HASH

## PRODUCT GUIDE



### 2G HASH COIN:

2g of Pressed, Stamped Hash  
Extracted via Flower Dry Sift  
Add to Flower to Consume,  
Refrigeration Rec.  
Dispenses ~1000-1200mg  
to Medical - Inhalation



### 2G HASH STICK:

2g Hash Pressed & Rolled into a Hollow Cone  
Extracted via flower dry sift. Smoke as a joint  
to consume. Return to tube & re-cap to extinguish.  
Refrigeration recommended  
Dispenses 1000-1200mg to Medical-Inhalation

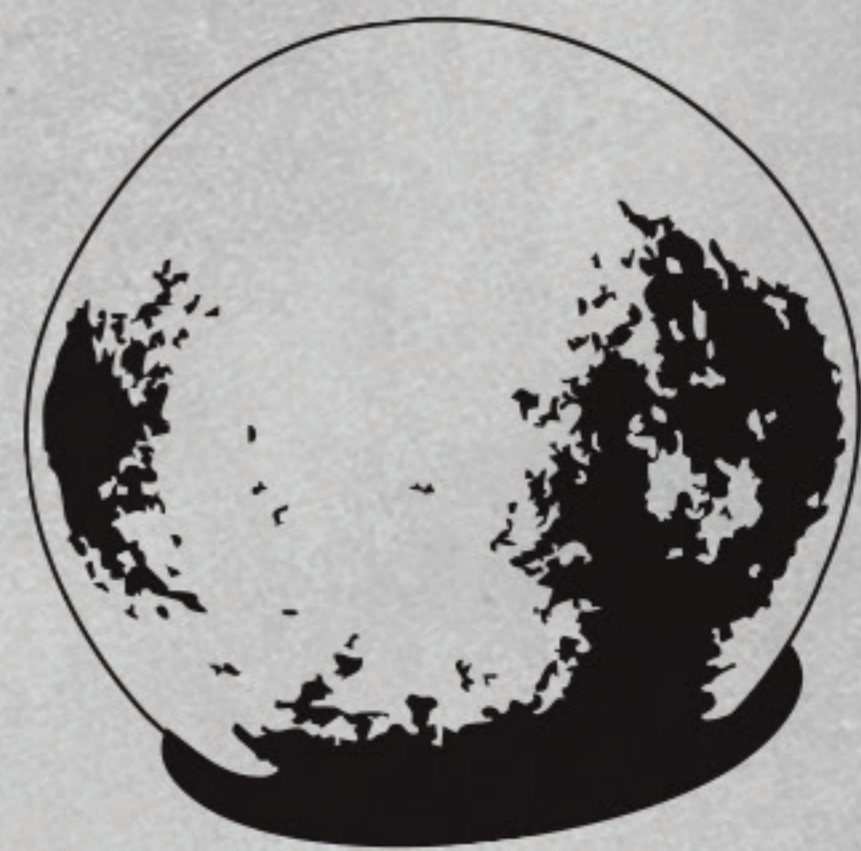
### 2G AGED HASH:

2g of Dry Sift Hash  
Aged for Increased Terpene Profile  
Complexity. Add to Flower to  
Consume, Store at Room Temp.  
Dispenses ~1100-1300mg  
to Medical - Inhalation



### 2G PIATTELLA:

2g of Aged, Cold Cure Bubble  
(or Water) Hash. Extracted via Whole Plant  
Fresh Frozen 'WPF' Aged for Increased  
Terpene Profile Complexity & Potency  
Dab ~460° to Consume, Store at Room Temp.  
Dispenses ~1300-1600mg to Medical - Inhalation




### 3G TEMPLE BALL:

Crafted by hand and built to age, 3G Temple Balls  
are premium spheres of pressed resin with deep  
roots in global hash tradition. Keep them sealed,  
cool, and dark to let time do its thing—flavor, effect,  
and smoothness only get better.  
Dispenses 2000-3200mg to Medical-Inhalation

**WE'VE GOT SOMETHING  
FOR EVERYONE \***

\* Consult with our local budtenders  
to figure out what is best for you.

**LEGEND**

 = EXCLUSIVE  
TO SUNBURN